

EAST AYRSHIRE COUNCIL
CONSULTATION DOCUMENT

TRANSFER OF COMMON GOOD LAND

PURPOSE

1. The purpose of this consultation is to ascertain public views and seek representations on a proposal to dispose of property held on the Council's common good account.

BACKGROUND

COMMUNITY EMPOWERMENT (SCOTLAND) ACT 2015

2. Campbell Area Tenants and Residents Association (CATRA) have submitted a request, in relation to a 25 year lease for ground situated within Greenside Park, Newmilns. Given Greenside Park is held on the Council's common good account, the provisions of the Community Empowerment (Scotland) Act 2015 must be adhered to. The Act places a statutory duty on local authorities to publish details of any proposed disposal or change of use of common good property and conduct a consultation inviting representations before deciding to dispose of or change the use of land or property.

CAMPELL AREA TENANTS AND RESIDENTS ASSOCIATION

3. Established in 2008, Campbell Area Tenants and Residents Association, herein referred to as CATRA, is a registered tenants organisation, registered and funded by East Ayrshire Council as per the Housing (Scotland) Act 2001. The organisation's overall aim is to safeguard and promote the interests of residents in the area on matters concerning housing, the repair, maintenance, condition and standard of properties, the environment, and the social and community life of the area.
4. Within the organisation's remit, is a focus on collaborating with the wider community to increase and improve community activities and facilities for everyone its area of operation. Since its inception CATRA has achieved this by working in partnership with East Ayrshire Council's Housing Service and other departments, East Ayrshire Federation of Tenants and Residents Associations, the Tenants Information Service (TIS), Police Scotland and other Newmilns community and voluntary organisations, with successfully having developed seasonal activities and gifts to local children and pensioners, gala day stalls, fun social activities and improving their community by reducing antisocial behaviour and negotiating local housing and area improvements. CATRA has improved the wider environment by installing and taking responsibility for hanging baskets and planters and the community asset transfer of an open space from East Ayrshire Council, now known as the Kathy Brown, MBE Memorial Garden. The work of

CATRA makes an effective contribution to the Regeneration of the Royal Burgh of Newmilns.

GREENSIDE PARK, NEWMILNS

5. Situated in the Newmilns area, Greenside Park is an open space area of parkland bequeathed to the community of Newmilns for recreational purposes. The park is used by local people and visitors alike for games, exercise, and picnics. The park has some traditional playpark equipment, mainly suited to the needs of younger children.

PROJECT PROPOSALS

PLAY EQUIPMENT

6. The original request indicated the siting of two pieces of equipment within the site however feedback from the original consultation indicated local residents had reservations regarding one of the pieces of equipment.
7. CATARA therefore are proposing the revised project which removes the piece of equipment which residents had concerns about and will instead focus on the play equipment aimed at a younger age level.
8. The equipment will be supplied and installed by Jupiter Play and Leisure Limited, via YALP, a world-renowned developer and supplier of a variety of dynamic and fun equipment. With installations in countries throughout the world. YALP creates inspiring environments that challenge both young and old to exercise, play and, above all, have fun. CATRA understands the benefits of the great outdoors on our physical and mental wellbeing and fundamentally believes that the way in which we play, exercise, and do sports enriches our lives with a positive contribution to physical, mental, and social health.

SUMMARY

9. Campbell Area Tenants and Residents Association have submitted a request for land which sits on the Common Good Register to further develop the local play park. The consultation meets with the Community Empowerment (Scotland) Act 2015 in relation to disposal of common good land.
10. CATRA believe their proposals will add value to Greenside Park in terms of the aesthetics of the park, increased facilities within the park as well as increased health and wellbeing provisions for the wider population and targeted wellbeing interventions for children and young people in particular.

REPRESENTATION

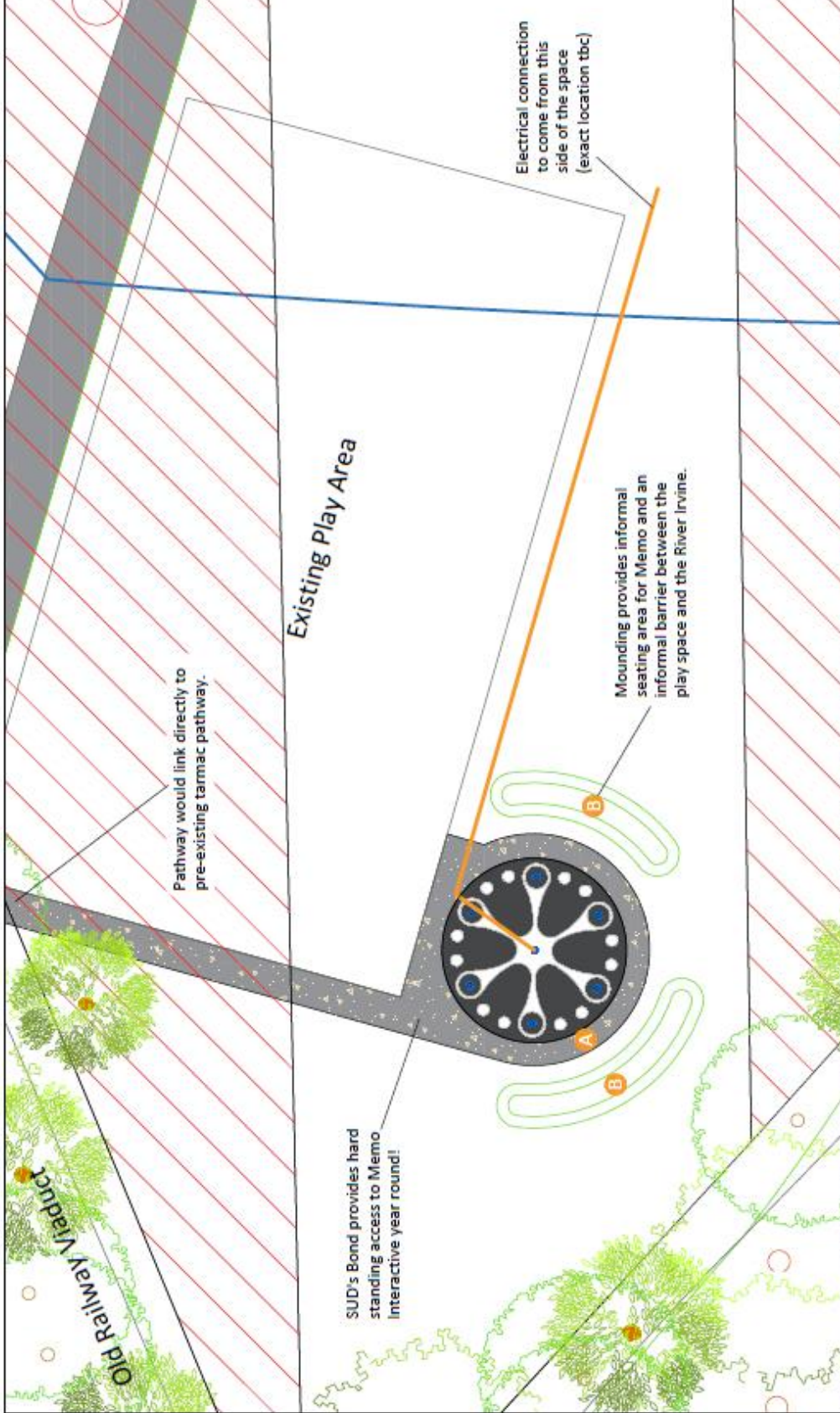
11. You can make a representation on the proposal to dispose of common good property by emailing CAT@east-ayrshire.gov.uk or by writing to:

East Ayrshire Council
Community Asset Transfer
Western Road,

Kilmarnock
KA1 1HW

In accordance with the Community Empowerment (Scotland) Act 2015, the consultation will last for a period of 8 weeks (15 January 2024 – 11 March 2024). The Council will consider all representations made and respond within 8 weeks of receiving any representations. The final response to representations will be published along with the original representations. The final decision will also be published and notified to all required parties in terms of the Community Empowerment (Scotland) Act 2015.

PLEASE SEE APPENDIX 1: Outline plan for interactive play equipment



Mounded Seating also provides an informal barrier

Items List

- Interactive Units**
 A. Memo Interactive Activity Zone Ref: YA3900
 B. Play Mounding (formed on site)

Site Details

Memo Interactive surfaced with 51m² Standard Memo Carpet with 261m Monoblock Edging, 67m² SUD's Bond Pathway surface with 77m PCC edging used in hard standing pathway connecting space to wider path network.
 51m² Excavation and MOT Type 1 Stone preparation for Carpet and 67m² Excavation and MOT Type 1 Stone preparation for SUD's Bond Pathway (total 118m²).

Excess spoil on site to be used in 37m² mounding around outside of interactive area at 800mm height.
 • 37m² Mounding at 1.0m Height (27m² Excavated Spoil from site, 37m² Topsoil, 41m² Turf)

Design and pricing assumes installation location is flat grass prior to install with good drainage. All electrical works and trenching to be carried out by others.

Additional Site Information

Interactive area positioned on council owned land (according to drawing 'PROPOSED PLAY AREA AT GREENSIDE, NEWMILNS' provided by East Ayrshire Council) however works may extend beyond council boundary's (electrical connections, access during works, pathways etc).

Subject to full site survey. Excavated spoil to be used in informal barrier mounding on site. Trenching and electrical connections have not been included and are to be completed by others. Electrical connection needs to lead directly to Memo unit prior to product installation.

Electrical connection relies on the retention of existing continuously powered light units. Lights can be upgraded, but interactive units require a constant power source. Junction box may also be required for electrical connection.

Key

	Carpet		SUDS Bond Pathways		Mounding/Grazing
	Existing Planting		Freefall		FreeSpace
			Non Council Owned Land		20m Buffer Zone

ALL EQUIPMENT AND SAFER SURFACING CONFORMS TO EN1176/7

REFERENCE: Newmilns Memo 00010641

SCALE: 1:200 @ A3

DATE: 30/11/2023

DRAWN BY: RP



Edinburgh Office: 0131 445 7589
 Nottingham Office: 0115 969 8859
 General Enquiries: info@jupiterplay.co.uk
 www.jupiterplay.co.uk